

MSDI Administrative Boundaries & U. S. Census Programs Update

Meghan Burns, Montana State Library

Wednesday, April 18, 2018



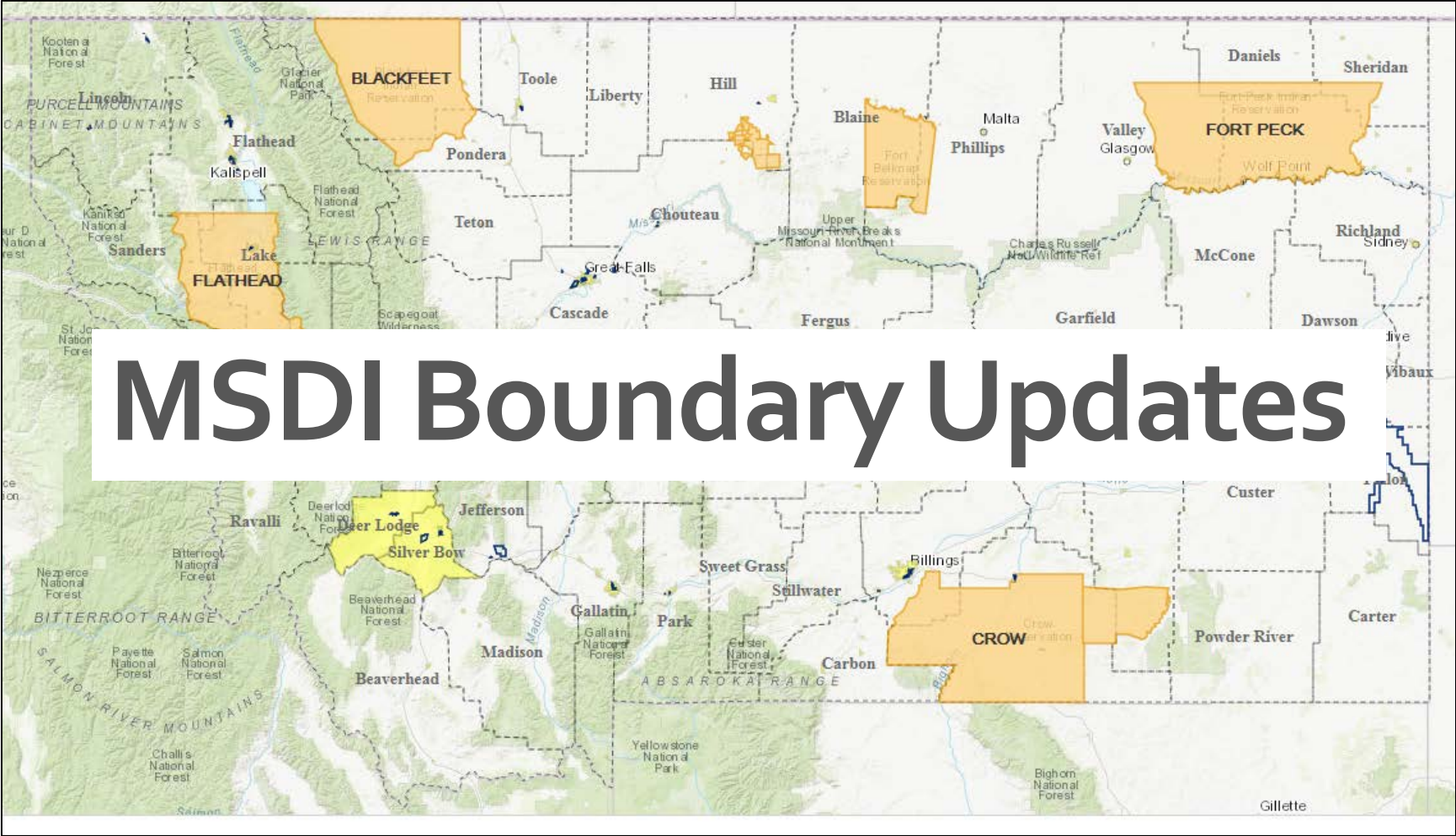
OUTLINE

MSDI Boundary Updates

- Web Services
- Layers
- Applications

U.S. Census Bureau Program Updates

- Boundary and Annexation Survey (BAS)
- School District Review Program (SDRP)



MSDI Boundary Updates

MSDI BOUNDARY UPDATES

Web Services Updates

- Esri Managed Services
- Will include web feature service functionality (WFS)
- Reorganized structure
- Changes to layer names, table names, and field aliases
- [Spreadsheet](#) listing changes
- April 2018

MSDI BOUNDARY UPDATES

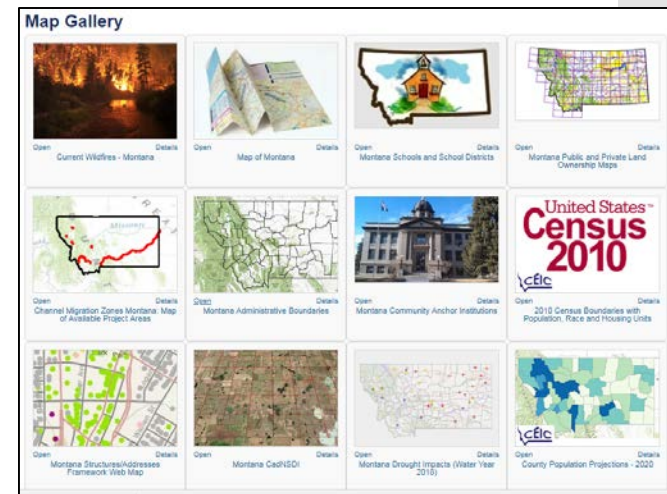
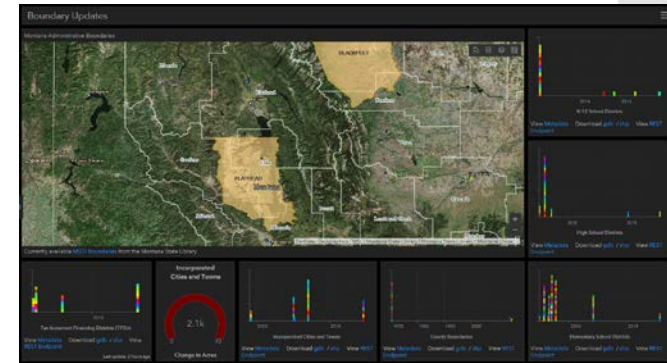
Layer Updates

- April 2018 Layer Updates:
 - Incorporated Cities and Towns - annexations, 2017 BAS Updates
 - Tax Increment Financing Districts (TIFDs) – new districts
 - School Districts – small boundary corrections
 - Counties – small boundary corrections
- Changes are listed on <http://msl.mt.gov/GIS/Boundaries>

MSDI BOUNDARY UPDATES

Applications

- Boundary Updates [Dashboard](#)
 - <http://arcg.is/CaOqS>
- Montana State Library [Map Gallery](#)
 - [Montana Administrative Boundaries](#)
 - [Montana Schools and School Districts](#)



United States Census Bureau
TIGERweb
Geography Division

Layers Legend Task Results

Select Vintage: Current

- Labels
- Transportation (Roads and Railroads)
- PUMAs, UGAs, and ZCTAs
- Tribal Census Tracts and Block Groups
- Census Tracts and Block Groups
- Military and Oth
- School Districts
 - Unified Schoo
 - Secondary Sc
 - Elementary S
- Places and Coun
- Estates
- County Subdi
- Subbarrio
- Consolidate
- Incorporated
- Census Designated Places
- American Indian, Alaska Native, and Native Hawaiian Areas
 - Alaska Native Regional Corporations
 - Tribal Subdivisions
 - Federal American Indian Reservations
 - Off-Reservation Trust Lands
 - State American Indian Reservations
 - Hawaiian Home Lands
 - Alaska Native Village Statistical Areas
 - Oklahoma Tribal Statistical Areas
 - State Designated Tribal Statistical Areas
 - Tribal Designated Statistical Areas
 - American Indian Joint-Use Areas
- Legislative Areas

Street, City, State, Zip

Landmass

U.S. Census Bureau Program Updates

OR ID WY SD

200m 100km 60m

Current Extent (degs): [-116.7922, 43.2606] [-102.9443, 49.6102]

Map Loaded.

U.S. CENSUS BUREAU UPDATES

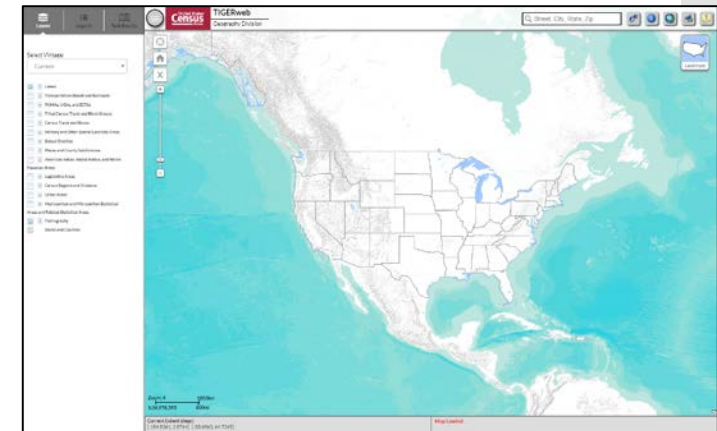
Boundary and Annexation Survey Program (BAS)

- Annual Program
- [2018 BAS Schedule](#)
 - January 1, 2018 – Changes must be legally in effect on or before
 - March 1, 2018 – Changes will be reflected in ACS/PEP
 - May 31, 2018 – Deadline to submit 2018 changes to be included in next year's BAS materials
- All Places (cities, towns, counties) are asked to participate

U.S. CENSUS BUREAU UPDATES

Boundary and Annexation Survey Program (BAS)

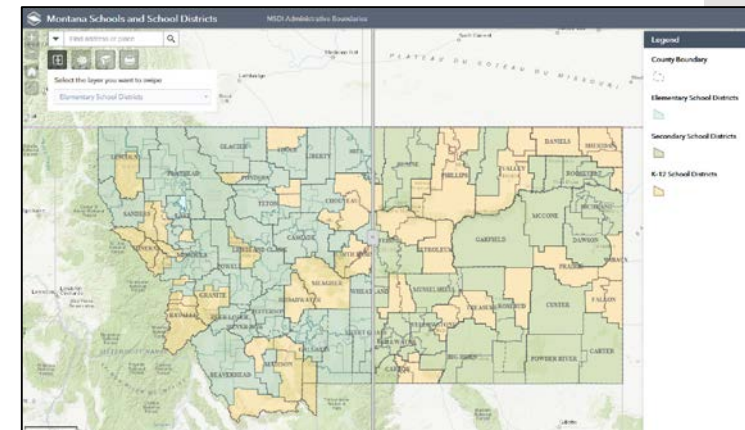
- Responses:
 - No Changes (Submit online form)
 - Boundary Updates:
 - Digital BAS (using your preferred software) – submit online
 - GUPS (Census Provided Software)
 - Paper BAS (use map sheets provided by Census)
- View and Download Data:
 - [Legal Boundary Change/Annexation Data 1980 – 2017](#)
 - [TIGERweb](#) Applications (Interactive Web App)
 - <https://tigerweb.geo.census.gov/tigerweb/>



U.S. CENSUS BUREAU UPDATES

School District Review Program (SDRP)

- Usually a Biennial Program (every 2 years)
- 2017 SDRP
 - December 29, 2017 – Deadline to submit 2017 changes
- [2018 SDRP Schedule](#)
 - June 2018 – Designate a School District Mapping Coordinator
 - August 2018 – Receive instructions and materials
 - December 2018 – Deadline to submit 2018 changes
- Mapping Coordinator
 - Works with OPI and School District Superintendents to verify and update:
 - Elementary, Secondary, Unified (K-12) Boundaries
 - School District Names
 - Grade Level



Meghan Burns

MSDI Administrative Boundaries Theme Steward

BAS State Certification Officer

School District Mapping Coordinator

Montana State Library

(406) 444-1550

mburns2@mt.gov

