

Indicators of Economic Improvement

1

PRESENTATION BY:

**MONTANA DEPARTMENT OF COMMERCE
CENSUS AND ECONOMIC INFORMATION CENTER
(CEIC)**

MAY 22, 2012

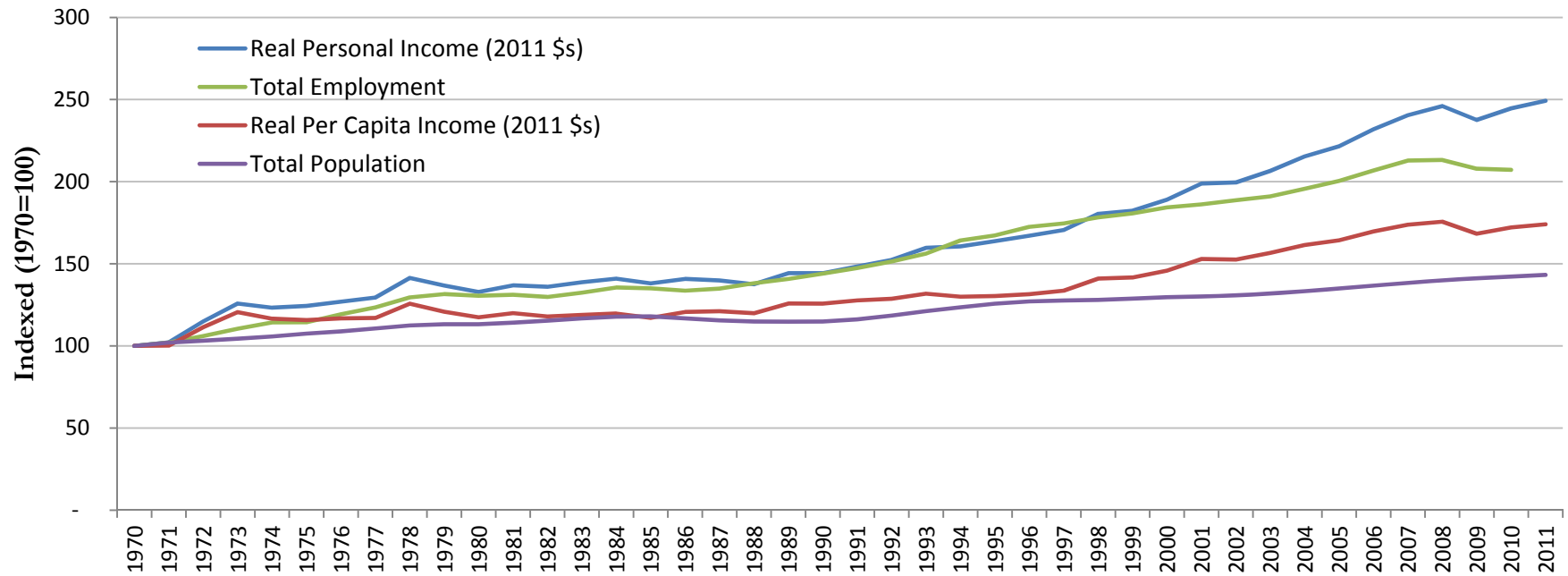
Growth Measures

2

Historical Overview- Growth Measures

3

Growth Indicators, Montana 1970-2011



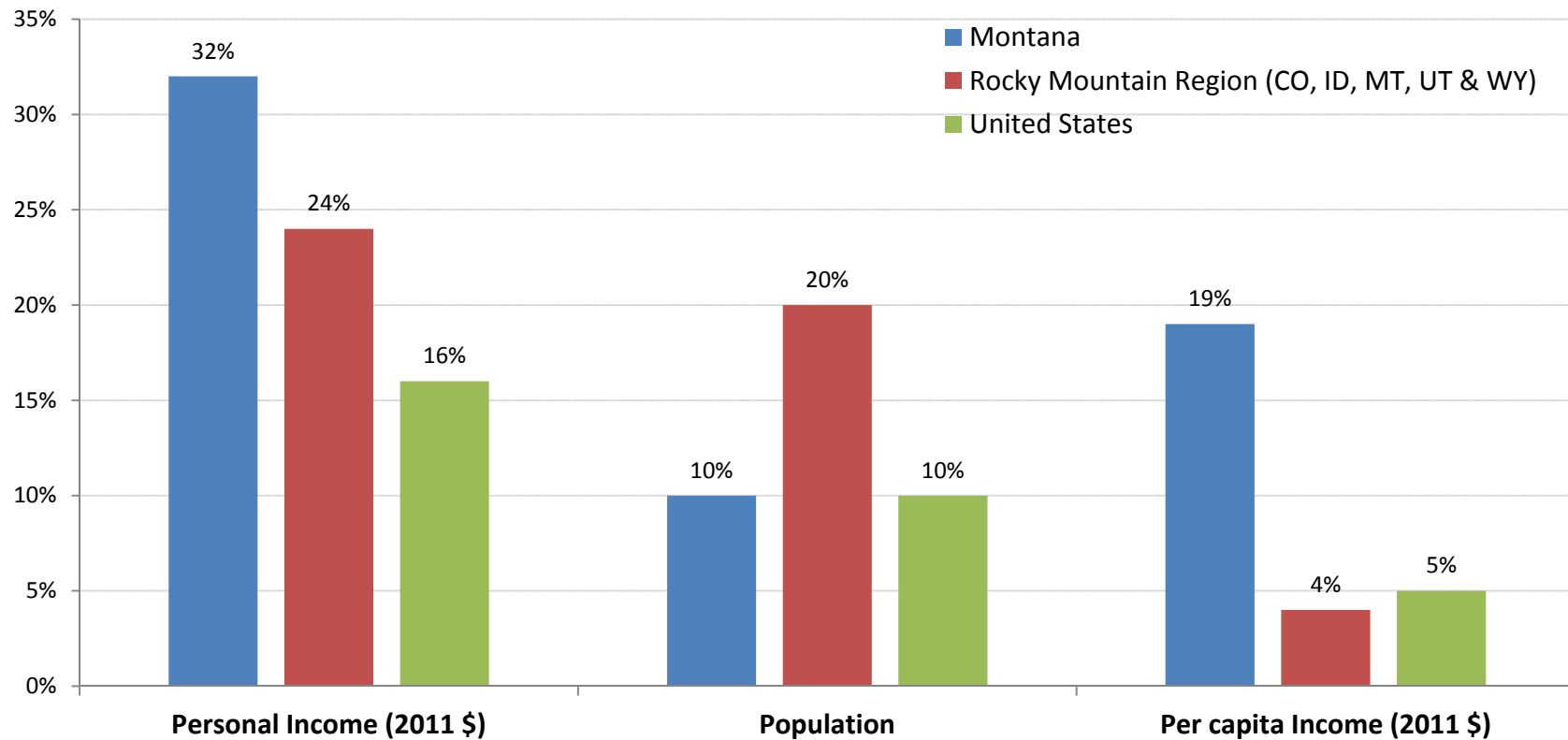
Source: US Department of Commerce, Bureau of Economic Analysis. Data last updated March 28, 2012.

NOTE - New estimates for 2011; revised estimates for 2008-2010.

Income Measures with Population Growth

4

Montana, Rocky Mountain Region & U.S., Percent Change 2000-2011

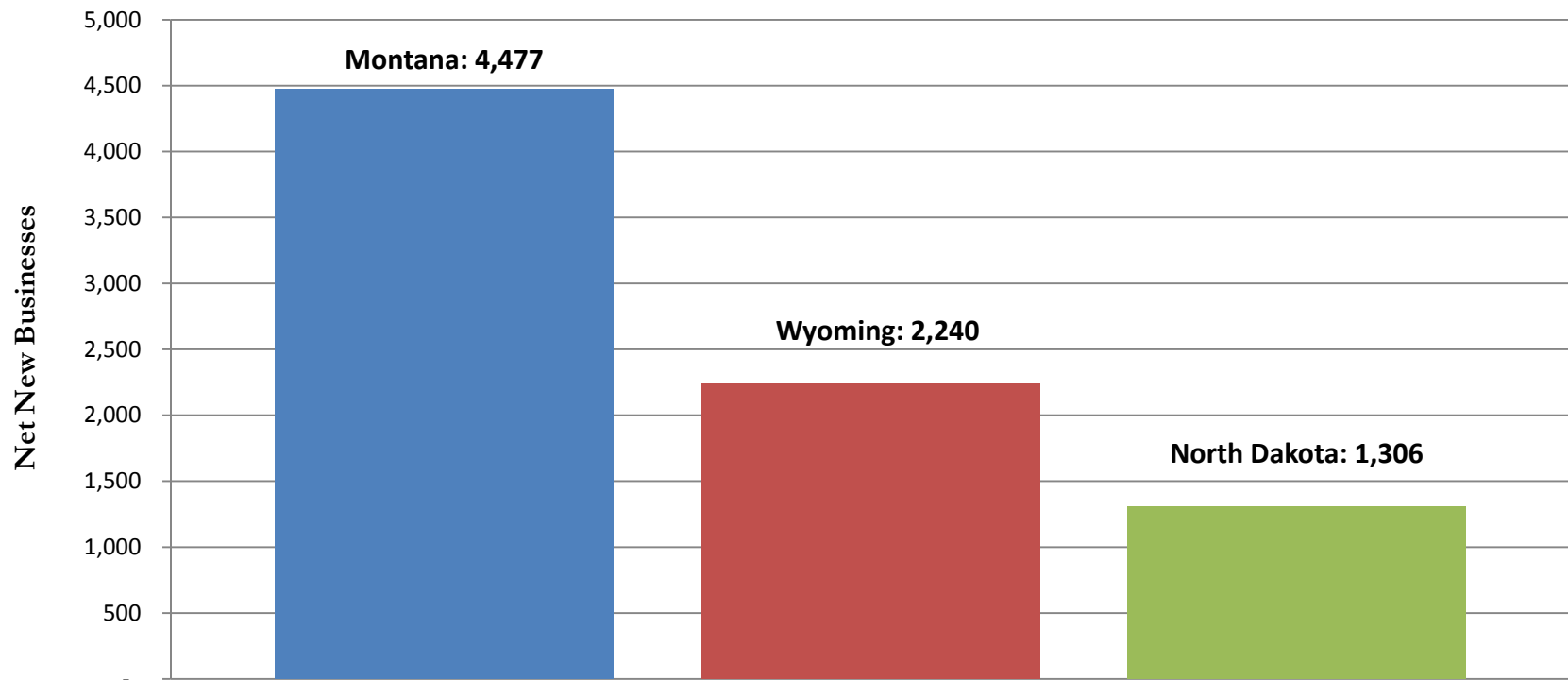


Source: US Department of Commerce, Bureau of Economic Analysis - Table SA1-3 *Personal income summary*.
Data last updated March 28, 2012 - new estimates for 2011; revised estimates for 2008-2010.

New Businesses Comparison

5

Net New Businesses, 2000-2009

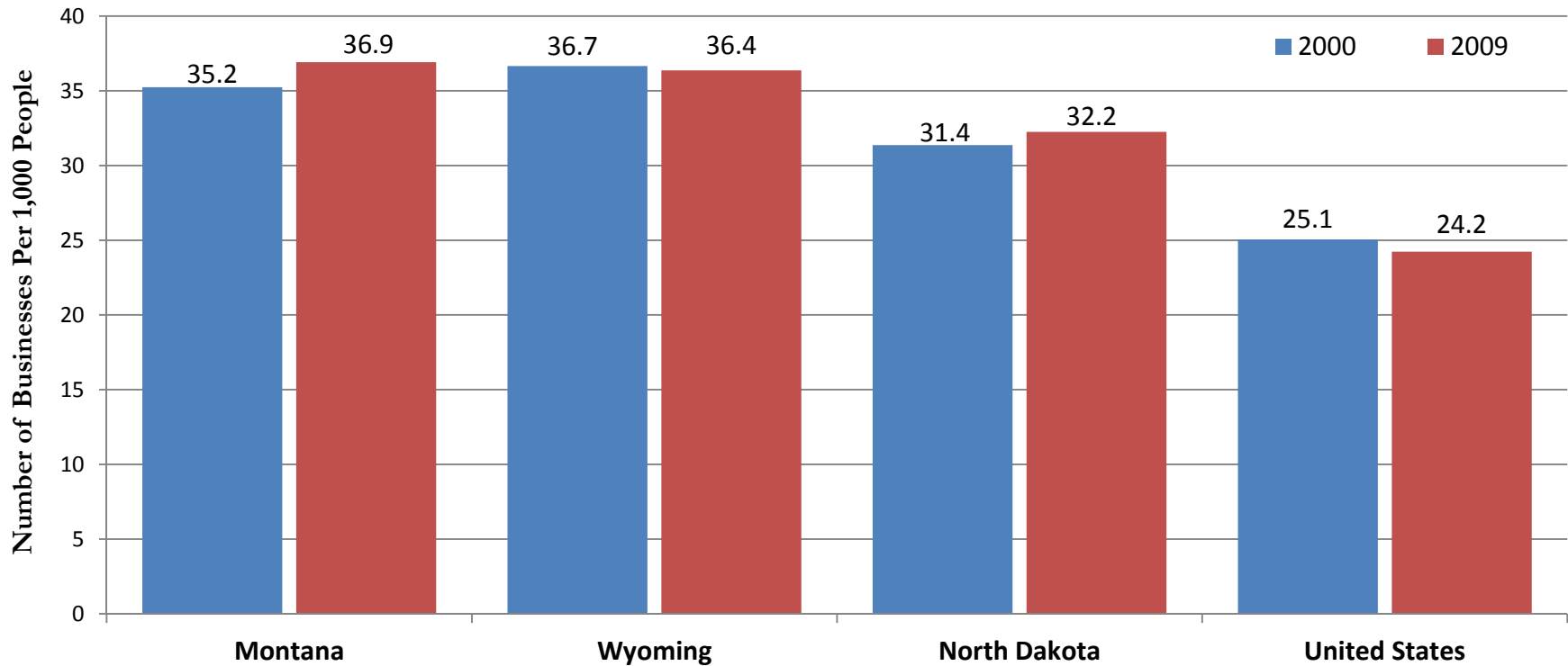


Source: US Department of Commerce, Census Bureau, *County Business Patterns*; Population Division, *Intercensal Estimates of the Resident Population*, Release Date: September 2011.

Number of Businesses Per 1,000 People

6

Number of Businesses Per 1,000 People, 2000 & 2009

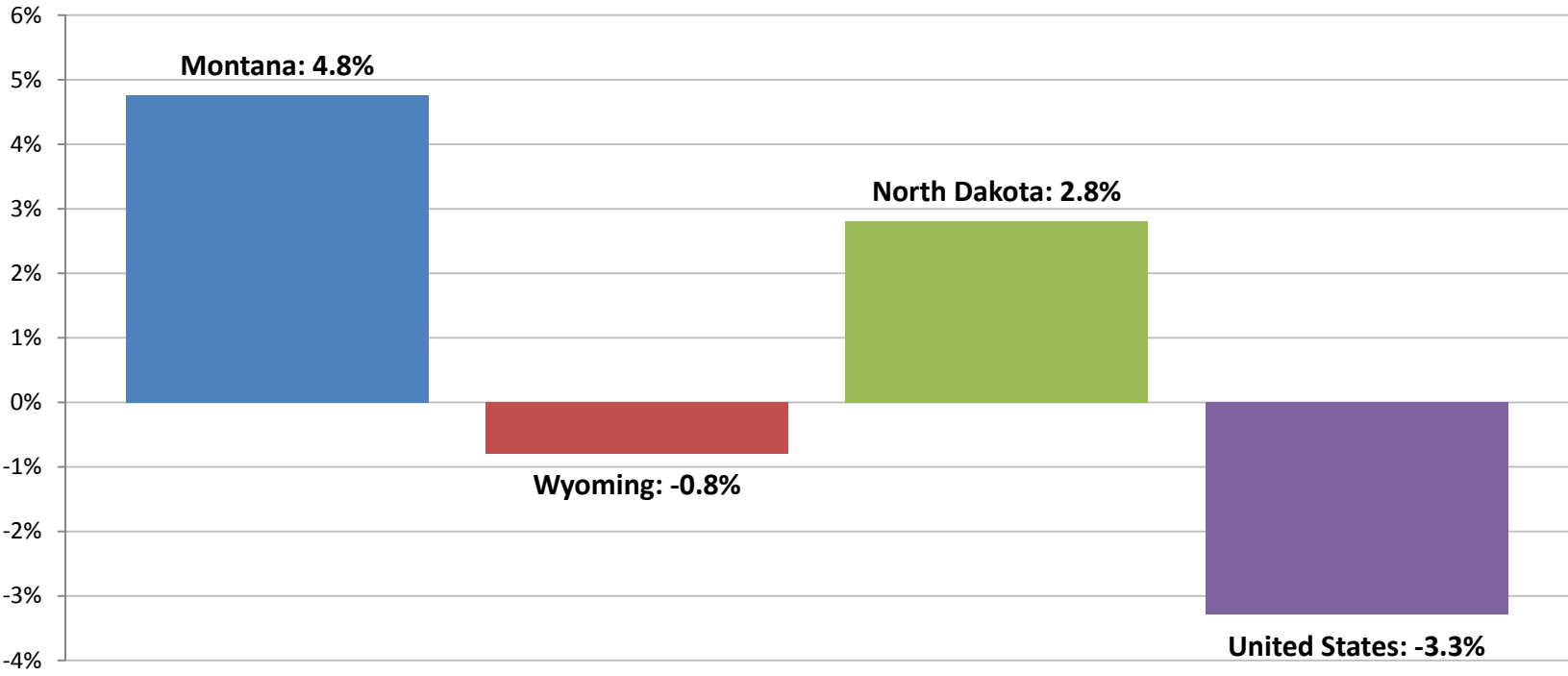


Source: US Department of Commerce, Census Bureau, *County Business Patterns*; Population Division, *Intercensal Estimates of the Resident Population*, Release Date: September 2011.

Change in Businesses Comparison

7

Change in Businesses Per 1,000 People, 2000-2009



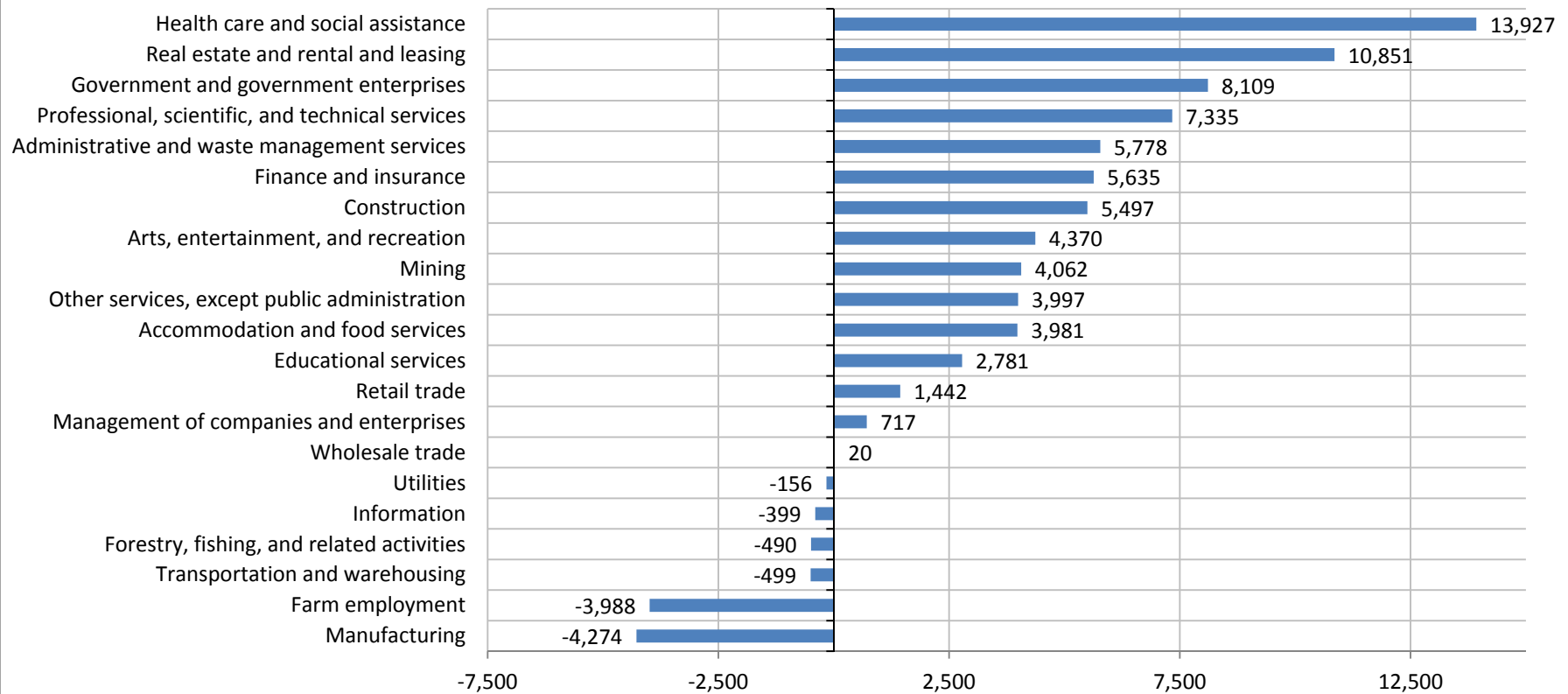
Source: US Department of Commerce, Census Bureau, *County Business Patterns*; Population Division, *Intercensal Estimates of the Resident Population*, Release Date: September 2011.

Employment Measures

8

Employment by Industry

Change in Employment by Industry, Montana 2000-2010



Source: US Department of Commerce, Bureau of Economic Analysis. Last updated March 28, 2012.

NOTE - estimates of employment for 1990-2006 are based on the 2002 NAICS. The estimates for 2007 forward are based on the 2007 NAICS.

Service & Non-Service Related Industries

10

Non-Service Related Industries

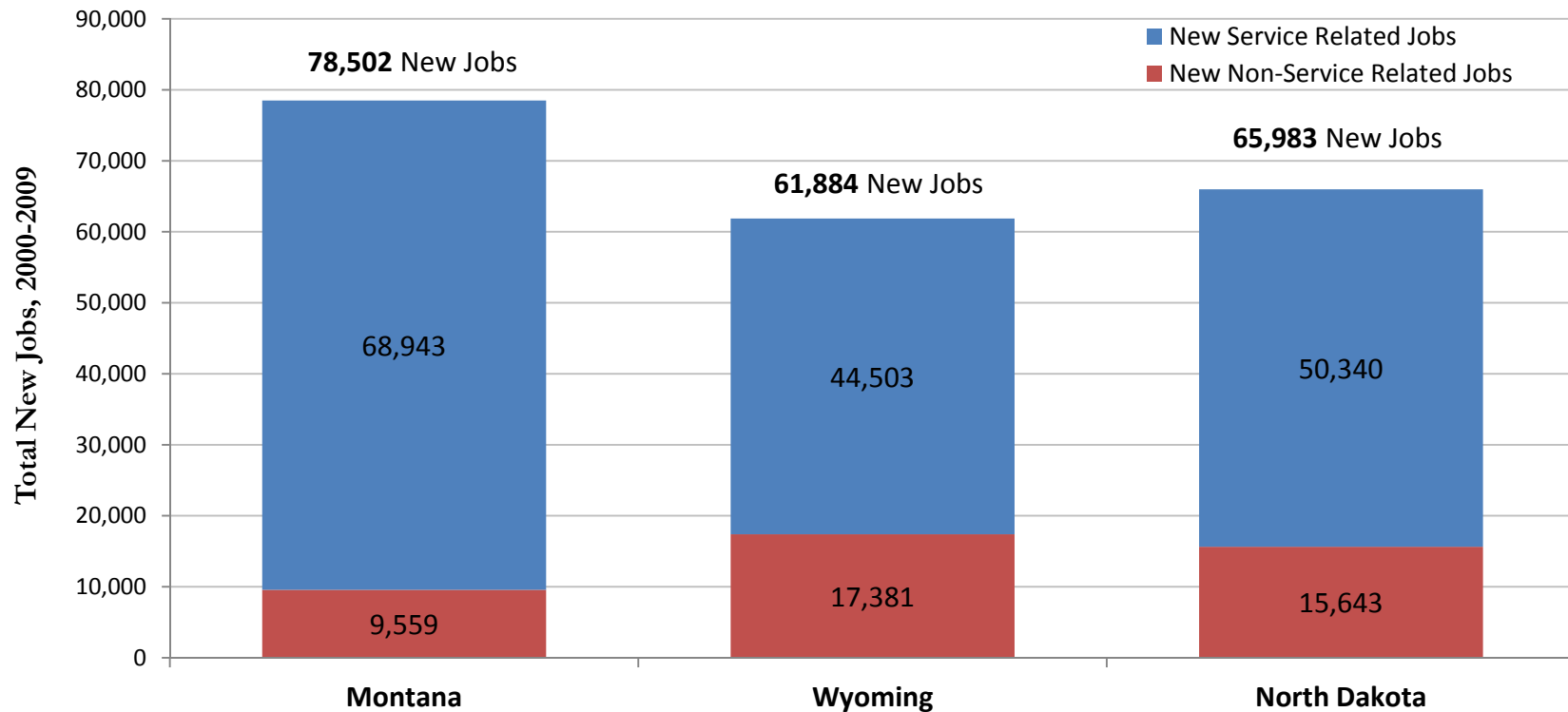
Farm employment
Forestry, fishing, and related activities
Mining
Construction
Manufacturing

Service Related Industries

Utilities
Wholesale trade
Retail trade
Transportation and warehousing
Information
Finance and insurance
Real estate and rental and leasing
Professional, scientific, and technical services
Management of companies and enterprises
Administrative and waste management services
Educational services
Health care and social assistance
Arts, entertainment, and recreation
Accommodation and food services
Other services, except public administration
Government and government enterprises

New Jobs By Service & Non-Service Industries

New Jobs Created by Service & Non-Service Related Industries, 2000-2010



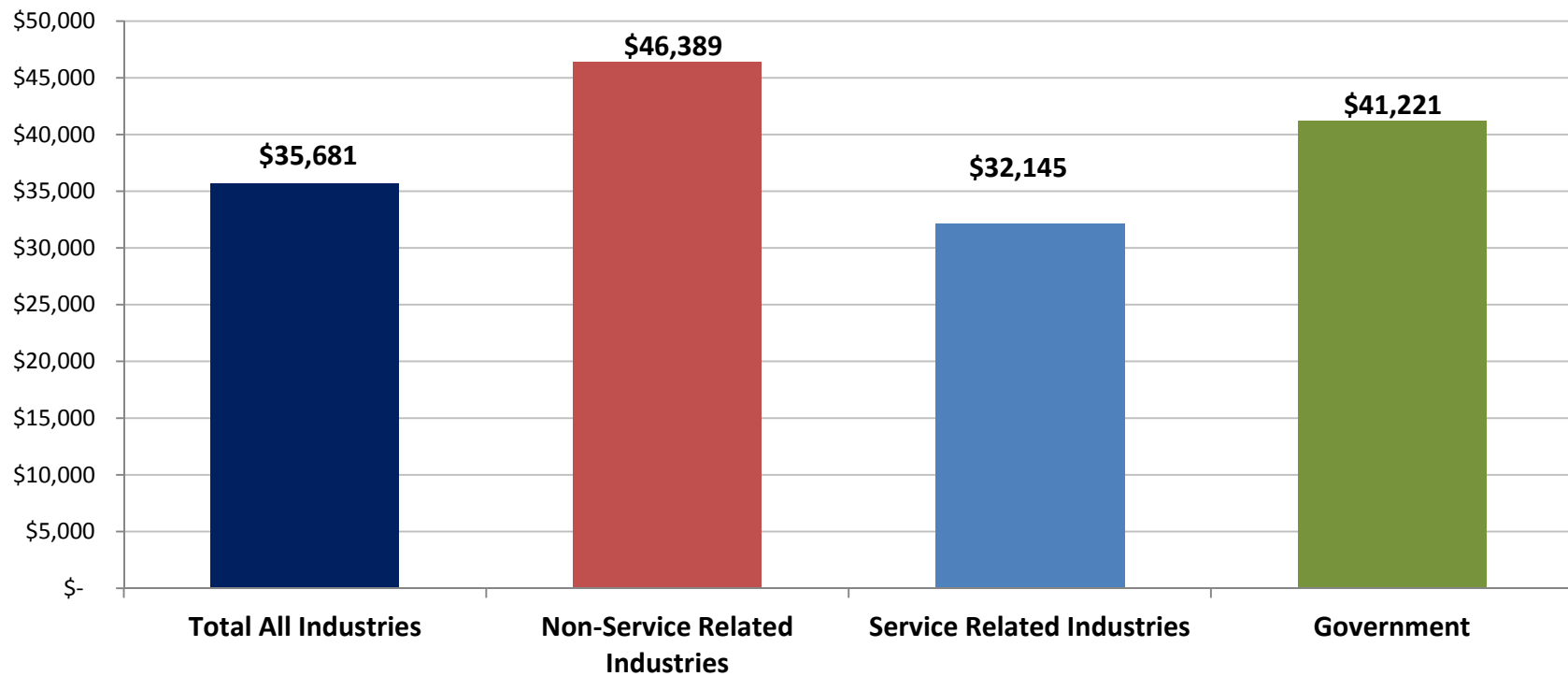
Source: US Department of Commerce, Bureau of Economic Analysis. Last updated March 28, 2012.

NOTE - estimates of employment for 1990-2006 are based on the 2002 NAICS. The estimates for 2007 forward are based on the 2007 NAICS.

Average Annual Wage by Sector

12

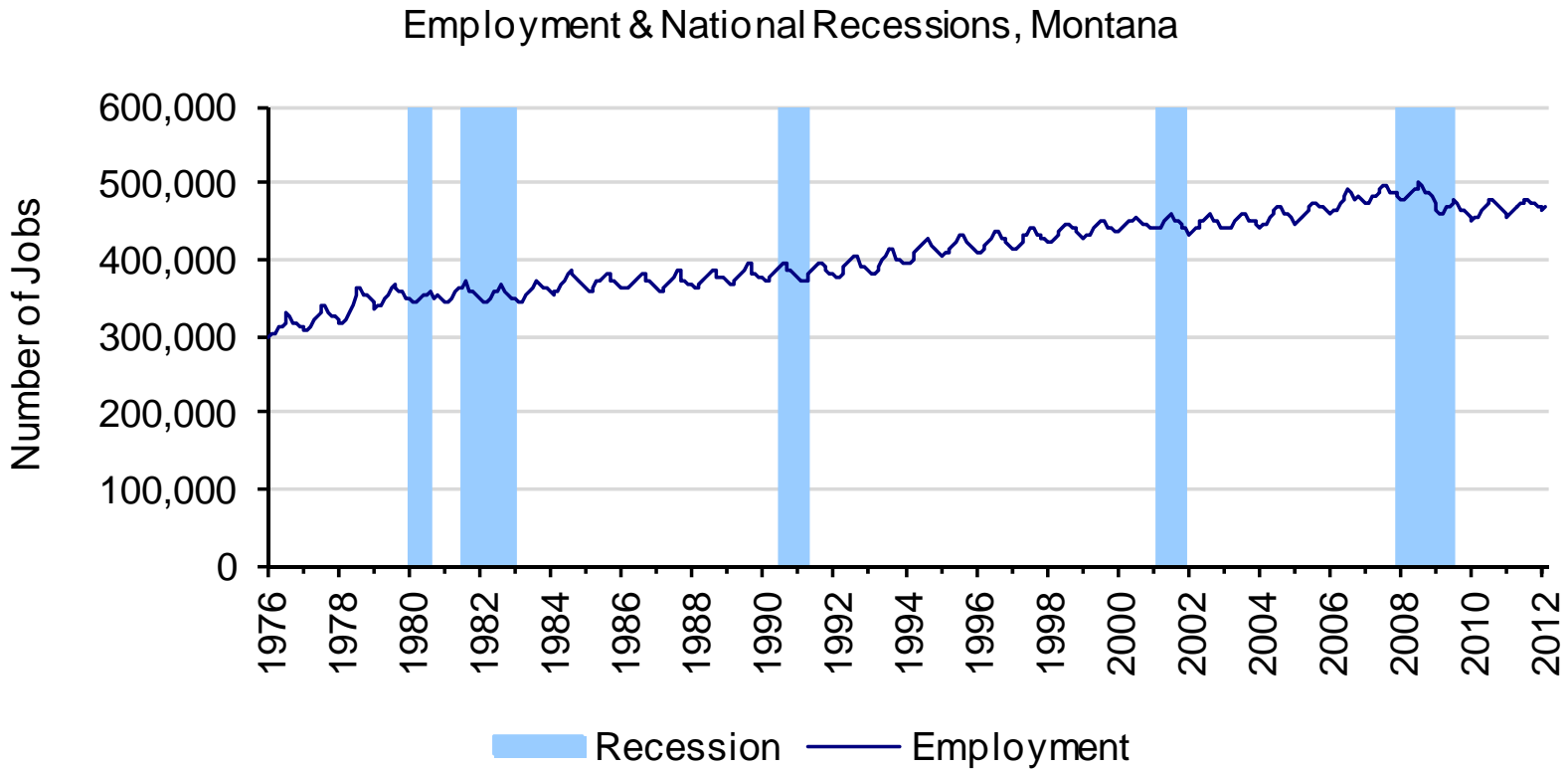
Average Annual Wages & Salary, Montana 2010 (2011 \$s)



Source: US Department Labor, Bureau of Labor Statistics, *Quarterly Census of Employment and Wages (QCEW)*.
Downloaded from Headwaters Economics Group, May 21, 2012.

Employment Trends in Montana

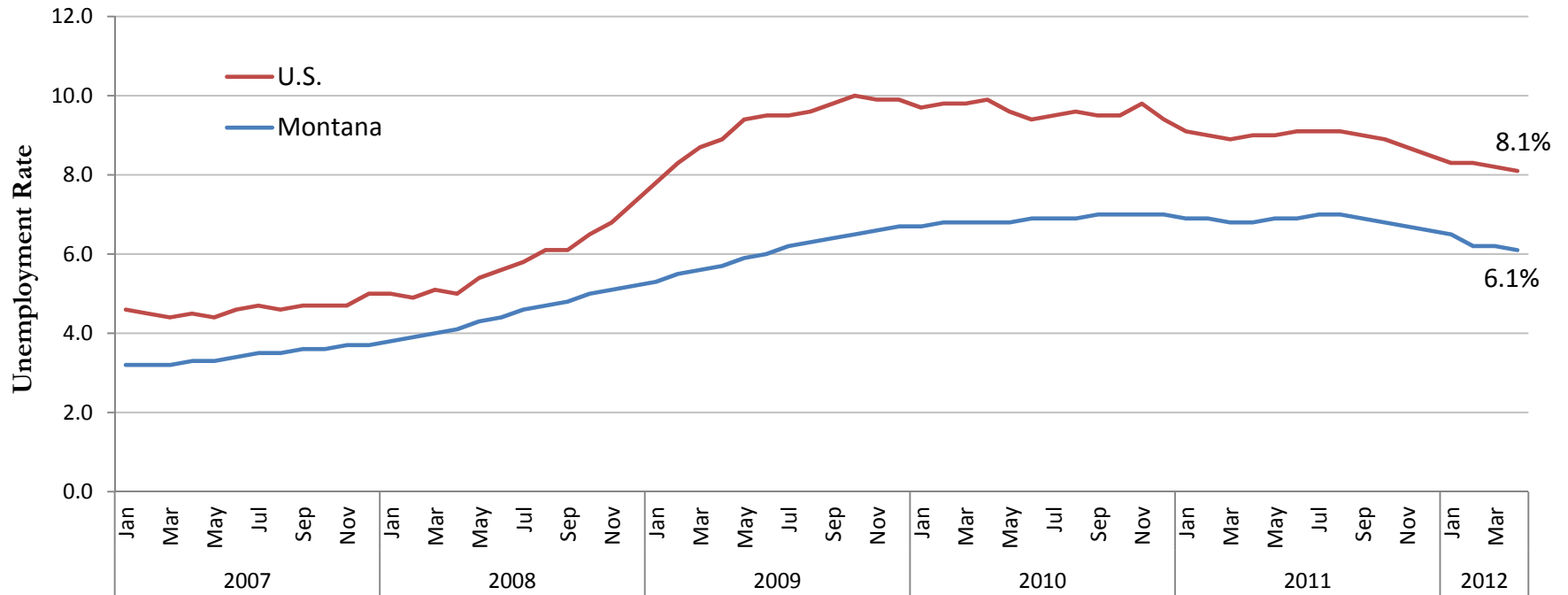
13



Source: Headwaters Economics (www.headwaterseconomics.org)

Unemployment Rate

Monthly Unemployment Rate, January 2007 - April 2012
(Seasonally Adjusted)

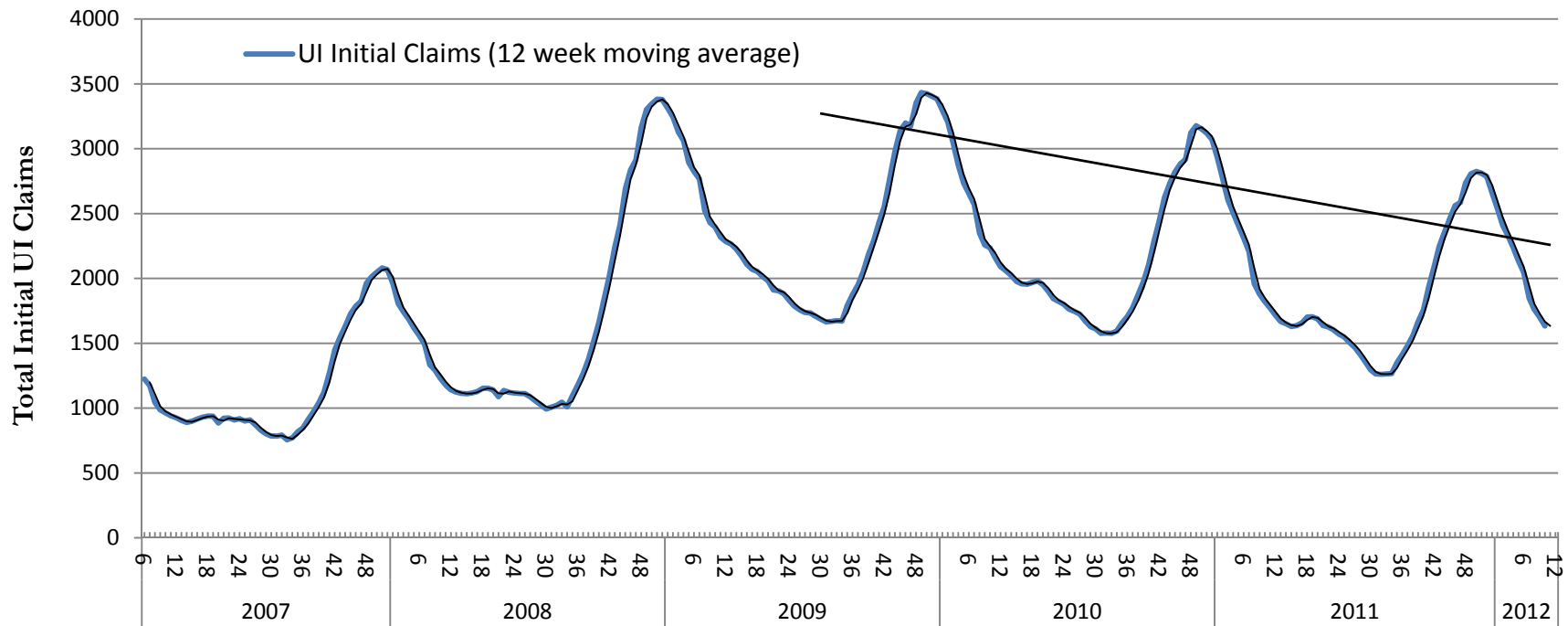


Source: US Department of Labor, Bureau of Labor Statistics, *Local Area Unemployment Statistics (LAUS)* (Montana Data); *Current Population Survey (CPS)* (U.S. Data). Data Current through May 21, 2012.

Unemployment Insurance (UI) Claims

15

Initial Unemployment Insurance Claims, Montana January 2007 - March 2012
(12 week moving average, not seasonally adjusted)



Source: Montana Department of Labor & Industry, Research & Analysis. Data last updated May 11, 2012. Compiled 5/14/2012 by the Census & Economic Information Center, MT Dept. of Commerce.

Commerce Highlights

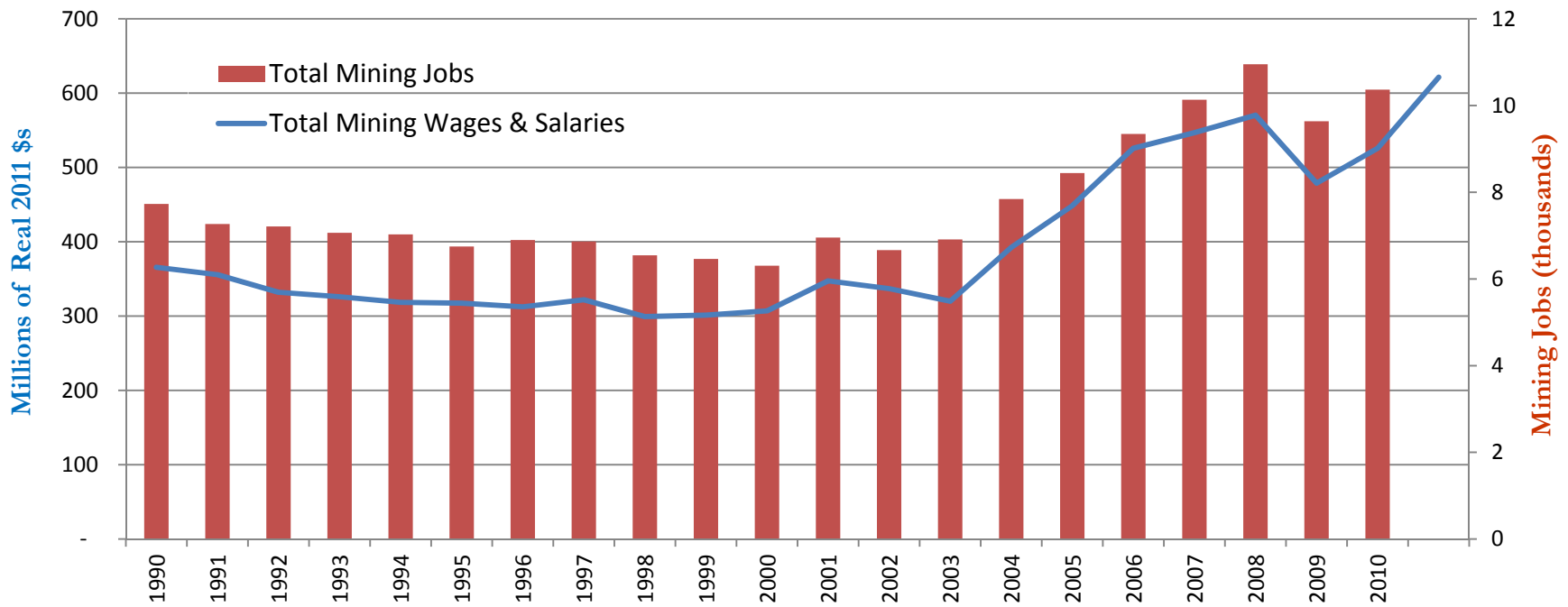
16



Energy Jobs

17

Total Mining Jobs, Wages & Salaries, Montana 1990-2011



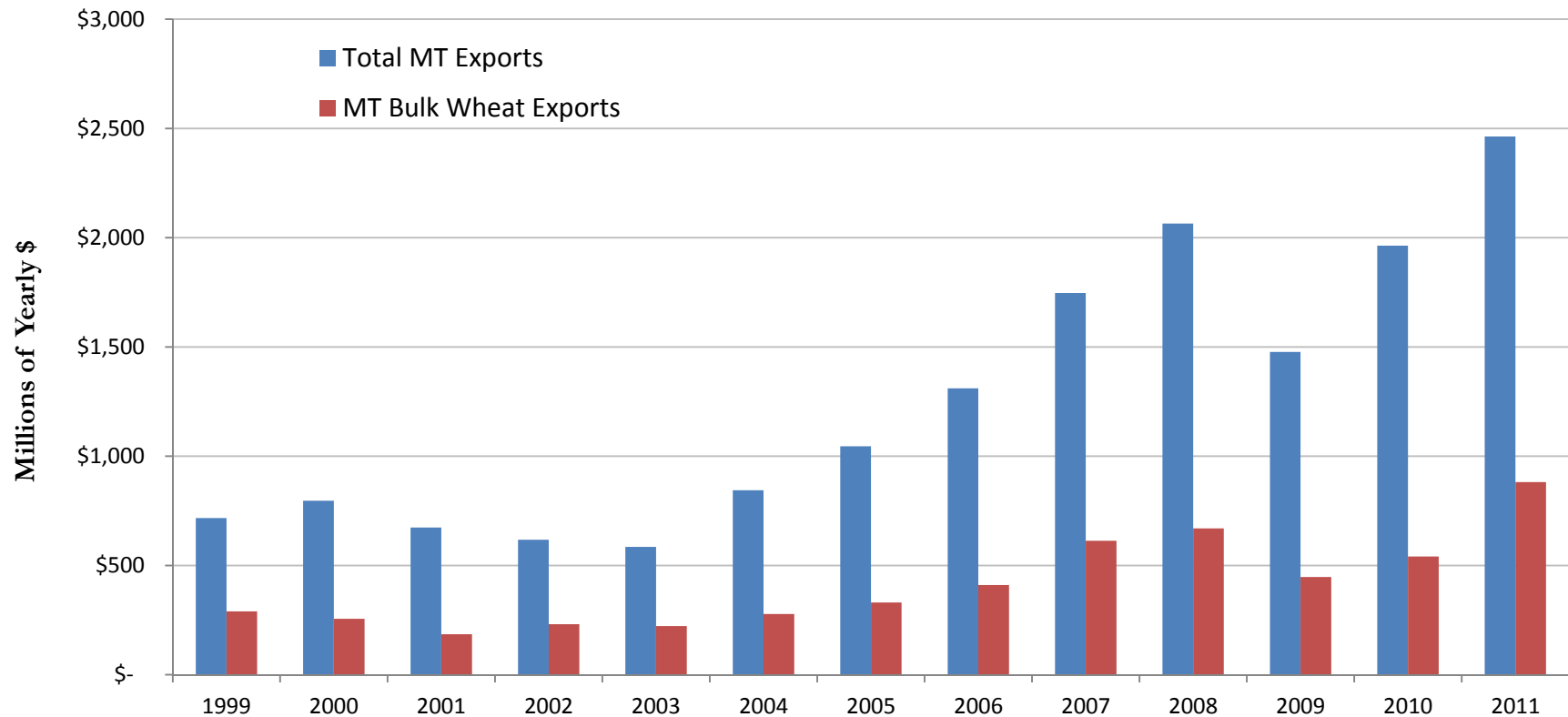
Source: US Department of Commerce, Bureau of Economic Analysis. Last updated March 28, 2012.

NOTE - estimates of employment for 1990-2006 are based on the 2002 NAICS. The estimates for 2007 forward are based on the 2007 NAICS.

Record Exports, Montana

18

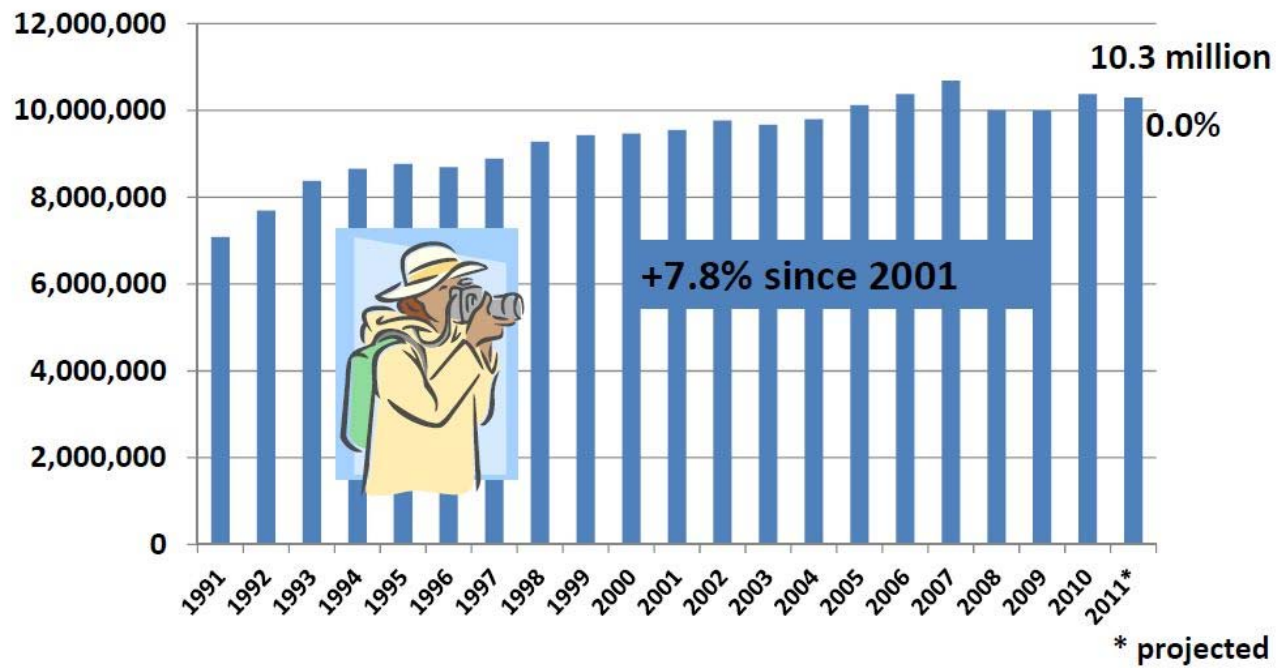
Total & Bulk Wheat Exports, Montana 1999-2011



Source: *Bulk Wheat* - National Agricultural Statistics Service (NASS); *All Other Exports Data* - WISER Trade.

Tourism in Montana

MT Nonresident Visitation: 1991-2011



Economic Dashboard

20



Contact Information

21

**Census & Economic Information Center
(CEIC)**

Montana Department of Commerce

(406) 841-2740

Email Questions: DOCCEIC@mt.gov

Website: ceic.mt.gov

[PowerPoint presentation available on CEIC's Web Site](#)